



YF-24-C03SX-03-001 (IP44)



YF-24-J03PE-03-001 (IP44)



防水胶垫 Waterproof cushion

- 锁定3芯的设备接插件，具有接点，用于中线，直线，预先适配的安全接地。
 - 高电流容量20A/250VAC。
 - 使用不同的颜色（蓝色输入）进行输入输出（灰色输出）的控制，避免互配的可能性。
 - 快速简便的锁定系统。
 - 使用美国进口镀铜进行镀银双项品质保证，增加电流的稳定性及有效的温升控制。
 - IP44及IP65双向选择。
 - 20A rms 的额定电流。
 - 独特的内芯铜针防脱出设计。
- Locking 3-pin connector of the device, with contacts for the middle, straight, pre-adaptation safety ground
 - High current capacity 20A/250VAC
 - The use of different colors (blue line) input and output (output gray) control, to avoid the possibility of interworking
 - Fast and easy locking system
 - Use of U.S. imports carried silver-plated beryllium copper double entry, quality assurance, increasing the stability of the current and effective temperature control
 - IP44 and IP65-way choice
 - 20A rms current rating
 - Unique copper core needle anti prolapse design



独特的插销式按扣设计
Unique snap button



防过位定卡片
anti- positioning part



镀金+银触点130U镀银
Gold-plated with 130u
silver contact



防水夹线圈
Waterproof coil clip

YF-24 系列产品规格参数表

YF-24 SERIES SPECIFICATIONS SHEET

产品图 PICTURE	反装 Male plug & Female socket		
		YF-24-J03PE-03-001 不防水IP44	YF-24-J03PE-04-001 电源插头二代 (右IP65)
			
		YF-24-C03SX-03-001 电源插座二代 (右IP44)	YF-24-C03SX-04-001 电源插座二代 (右IP65)
			
		YF-24-C03SX-01-200 YF电源转接器灰 (右IP44) power converter(Gray)	

排列图

线材规格	Cable specification	2.5mm ² ~ 4mm ² / 14 ~ 12 AWG	2.5mm ² / 14 AWG
线径范围	Diameter range	Φ8mm ~ Φ12mm	Φ8mm ~ Φ10mm
接触件直径×数量	Contact diameter × number	Φ2.0×3	
额定电流(A)	Rated Current (A)	20A	
工作电压(AC.V.RMS)	Operating voltage (AC.V.rms)	500V	
接触电阻	Contact resistance	<3mΩ	
温升	Temperature rise	20A时温升在30℃以下 (20A contact temperature below 30℃), 25A.....40℃↓, 30A.....50℃↓.	
耐电压(AC.V)1分钟	Withstanding Voltage (AC.V) 1 minute	2500V	
绝缘电阻	Insulation resistance	> 500MΩ	
防护等级	Protection level	IP44	
耐久次数	Durability	> 500次	
工作温度	Working temperature	-40℃ ~ 80℃	
连接方式	Connecting mode	闩锁连接	Latching lock
接线方式	Assembly wire	焊接与锁螺丝式	Solder&lock screw

材料

外壳、绝缘部件	Housing, the insulating parts	高性能工程塑料	High-performance engineering plastics
五金	Hardware	锌合金(珍珠硬铬)	Zinc Alloy (pearl hard chrome)
铜针	Copper needles	铜合金(镀金)2U金+70U银电镀层	Copper alloy (2u gold-plated and 70u Silver plated)
防水圈	Waterproof circle	硅胶	Silica gel
阻燃等级	Flammability rating	UL94-V0	UL94-V0



YF-24-C03PE-03-001电源插头二代 (左IP44)



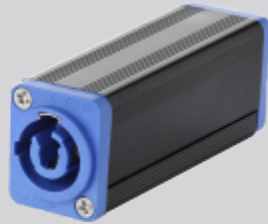
YF-24-C03PE-04-001电源插头二代 (右IP65)



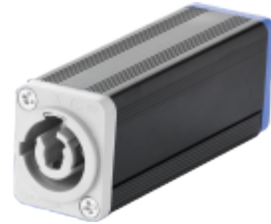
YF-24-J03SX-03-001电源插座二代 (左IP44)



YF-24-J03SX-04-001电源插座二代 (右IP65)



YF-24-J03SX-01-200 YF电源转换器蓝 (左IP44)
YF power converter(Blue)



YF-24-J03SX-03-200 YF电源转换器灰+蓝 (左+右IP44)
YF power converter (Gray+Blue IP44)

2.5mm² ~ 4mm² / 14 ~ 12 AWG

Φ8mm ~ Φ12mm

Φ2.0×3

20A

500V

< 3mΩ

12A.....30°C, 15A.....40°C, 20A.....50°C。

2500V

> 500MΩ

IP44

> 500次

-40°C ~ 80°C

门锁连接

Latching lock

焊接与锁螺丝式

Solder&lock screw

高性能工程塑料

High-performance engineering plastics

锌合金(珍珠硬铬)

Zinc Alloy (pearl hard chrome)

铜合金(镀金)2U金+70U银电镀层

Copper alloy (2u gold-plated and 70u Silver plated)

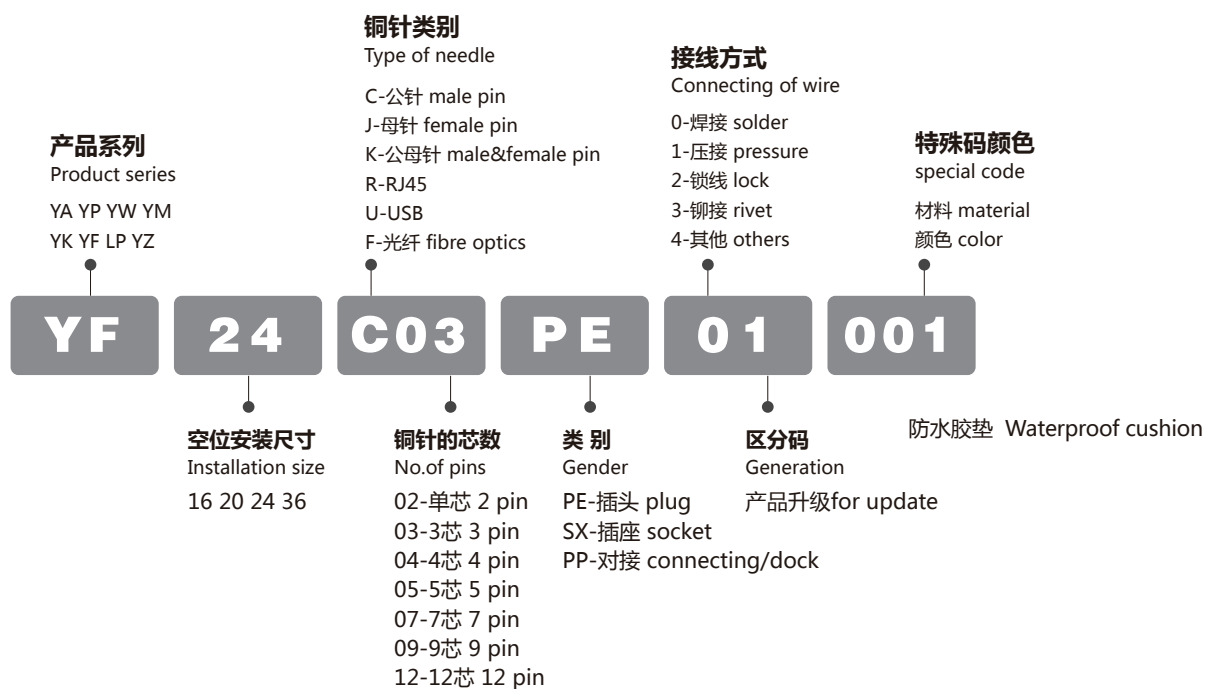
硅胶

Silica gel

UL94-V0

UL94-V0

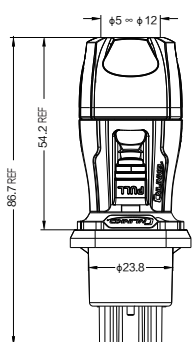
型号标志代号 MODEL CODE



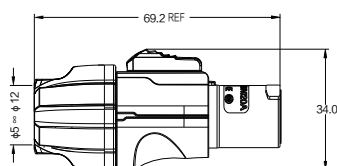
连接方式 CONNECTION SCHEMES



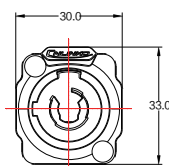
外形尺寸图 DIMENSION FIGURE



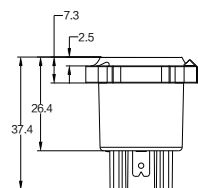
产品外型尺寸图
dimensions figure



夹爪紧固式插头PE (外型尺寸图)
PE clamping cable plug
(dimensions figure)



插座 SX (外型尺寸图)
SX socket (dimensions figure)



安装开孔图
Installation hole figure