

DH-24

防水连接器
WATERPROOF CONNECTOR

简介

INTRODUCTION





DH 24连接器，使用合金金属外壳，独特的卡簧式结构设计，旋转式锁紧，匹配电源、信号、USB、光纤不同的型号。使之符合工业设备的不同需求，满足设备的对连接器使用要求，广泛应用于工业信号传输及电源电流传输、数据传输等不同工业领域。

DH24 series includes connecting for power shpply, signal, USB and fiber , which is made up of sepcial alloy for shell and a clip spring type unique shructure design and a rotary lock , to meet the different needs of industrial equipment , they are widely used in transmission current , signal and date in different industrial field.



DH-24 系列产品规格参数表

DH-24 SERIES SPECIFICATIONS SHEET

产品类型	PIN针正装	PIN针反装
产品图 PICTURE	 <p>DH-24-C03PE-01-001 3芯公头(焊接) 3Pins male plug(solder)</p>	 <p>DH-24-J03PE-01-001 3芯母头(焊接) 3Pins Female plug(solder)</p>
	 <p>DJ-24-J03SX-01-001 3芯母座(焊接) 3Pins Female socket(solder)</p>	 <p>DH-24-C03SX-01-001 3芯公座(焊接) 3Pins Male socket (solder)</p>

排列图

线材规格	Cable specification	2.5m ^{mm} ~ 4m ^{mm} /14 ~ 12 AWG	
线径范围	Diameter range	Φ8mm ~ Φ12mm	
接触件直径×数量	Contact diameter × number	3.0 × 3	
额定电流(A)	Rated Current (A)	20A	
工作电压(AC.V.RMS)	Operating voltage (AC.V.rms)	500V	
接触电阻	Contact resistance	<1mΩ	
温升	Temperature rise	20A时温升在30°C以下 (20A contact temperature below 30°C), 25A.....40°C↓, 30A.....50°C↓。	
耐电压(AC.V)1分钟	Withstanding Voltage (AC.V) 1 minute	2500V	
绝缘电阻	Insulation resistance	> 500MΩ	
防护等级	Protection level	IP65/IP67	
耐久次数	Durability	> 500次	
工作温度	Working temperature	-40°C ~ 80°C	
连接方式	Connecting mode	快速插拔连接	Plug/unplug
接线方式	Assembly wire	焊接式	solder

材料

外壳、绝缘部件	Housing, the insulating parts	高性能工程塑料	High-performance engineering plastics
五金	Hardware	锌合金(珍珠硬铬)	Zinc Alloy (pearl hard chrome)
铜针	Copper needles	铜合金(镀金4U)	Copper alloy (gold-plated 4U)
防水圈	Waterproof circle	硅胶	Silica gel
阻燃等级	Flammability rating	UL94-V0	UL94-V0

RJ45

USB

光纤 Fibre optics



DH-24-RJ45-P01 插头 Plug



DH-24-USB3.0-P01 插头 Plug

DH-24-F00PE-P01 光纤插头
Fibre optics plug

DH-24-RJ45-S01 插座 Socket



DH-24-USB3.0-S01 插座 Socket

DH-24-F00SX-S01 光纤插座
Fibre optics socket0.15m m² ~ 0.2m m² /26-24 AWG

Φ5.5mm ~ Φ7mm

8PIN

9PIN (3.0) & 4PIN (2.0)

2

1.5A

/

/

/

<30mΩ

/

/

/

1000V

/

> 500MΩ

IP65/IP67

> 500次

-40°C ~ 80°C

快速插拔连接 Plug/unplug

/

高性能工程塑料 High-performance engineering plastics

锌合金(珍珠硬铬) Zinc Alloy (pearl hard chrome)

铜合金(镀金2U) Copper alloy (gold-plated 4U)

硅胶 Silica gel

UL94-V0 UL94-V0

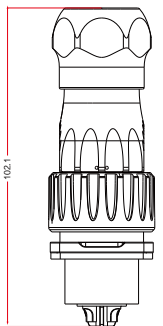
型号标志代号 MODEL CODE

产品系列 Product series YA YP YW YM YK YF LP YZ DH	铜针类别 Type of needle C-公针 male pin J-母针 female pin K-公母针 male&female pin R-RJ45 U-USB F-光纤 fibre optics	接线方式 Connecting of wire 0-焊接 solder 1-压接 pressure 2-锁线 lock 3-铆接 rivet 4-其他 others	特殊码颜色 special code 材料 material 颜色 color		
DH	24	C03	PE	01	001
	空位安装尺寸 Installation size 16 20 24 36	铜针的芯数 No. of pins 02-单芯 2 pin 03-3芯 3 pin 04-4芯 4 pin 05-5芯 5 pin 07-7芯 7 pin 09-9芯 9 pin 12-12芯 12 pin	类别 Gender PE-插头 plug SX-插座 socket PP-对接 connecting/dock	区分码 Generation 产品升级 for update	防水胶垫 Waterproof cushion

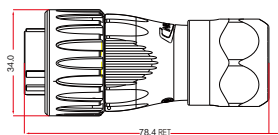
连接方式 CONNECTION SCHEMES



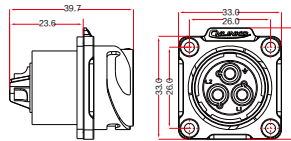
外形尺寸图 DIMENSION FIGURE



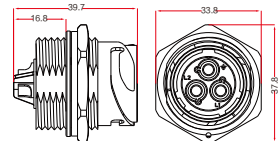
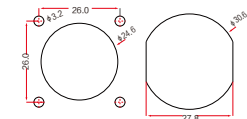
产品外型尺寸图
dimensions figure



夹爪紧固式插头PE (外型尺寸图)
PE clamping cable plug
(dimensions figure)



插座SX (外型尺寸图)
SX socket (dimensions figure)



安装开孔图
Installation hole figure