



YU-USB3-CPI-01-100
USB3.0插头带线(一头包胶)
USB3.0 male plug with cable (single rubber coating)



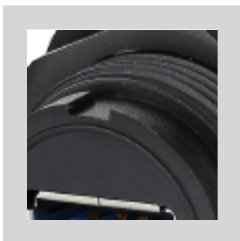
YU-USB3-JSX-01-001
USB3.0母座(不带线)
USB3.0 female socket(without cable)

- 独立的USB3.0插座设计，无需工具协助，安装方便，操作简易。
- 实现双头公母转接，卡扣锁紧，安全牢固。
- 可选线长订制。
- 兼容USB2.0，连接状态防水防尘等级达IP67。
- 电缆护套设计，有效保护电缆的出线。
- 坚固的连接体系为恶劣的环境下进行数据传输提供方案。

- Independent USB3.0 socket design, easy to install and operate
- Achieve double-headed male to female adapter, snap locking, ensure safe and stable
- Cable can be customized
- Compatible with USB2.0, protection level IP67
- Sheath of cable protect cable outlet well
- Solid connections system can provide the solutions for data transmission in harsh environments



YU-USB3-JSX-03-100
公头母座 标准线长1M
male plug+female socket with cable 1M



1/2卡口锁紧
1/2 bayonet connect



6U镀金触点
6U gold-plated copper contact



YU-USB 系列产品规格参数表

YU-USB SERIES SPECIFICATIONS SHEET

产品图 PICTURE



YU-USB3-CPI-01-100
USB3.0插头带线(一头包胶)
USB3.0 male plug with cable
(single rubber coating)



YU-USB3-CPI-02-100
USB3.0插头带线(两头包胶)
USB3.0 male plug with cable
(Double rubber coating)



YU-USB3-JSX-01-100
USB3.0母座
USB3.0 female socket



YU-USB2-CPI-01-100
USB2.0插头带线(一头包胶)
USB2.0 male plug with cable
(single rubber coating)



YU-USB3-JSX-03-100
公头母座 标准线长1M
male plug+female socket with cable 1M



YU-USB2-JSX-01-100
USB2.0母座
USB2.0 female socket

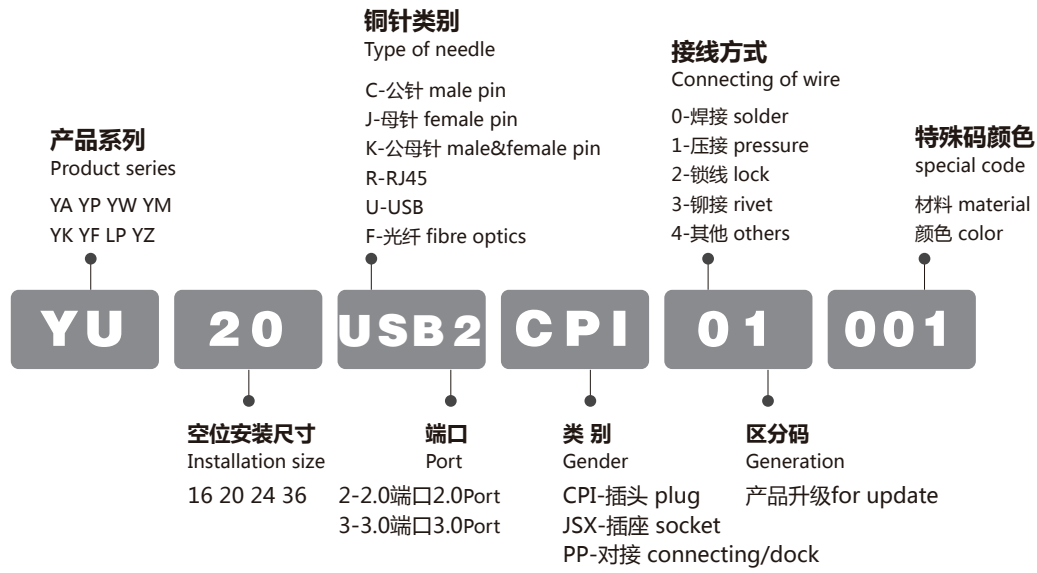
排列图

线材规格	Cable specification	0.15m ² ~ 0.2m ² /26-24 AWG	
线径范围	Diameter range	Φ5.5mm ~ Φ7mm	
接触数量	Contact diameter × number	9	4
额定电流(A)	Rated Current (A)	1.5A	
接触电阻	Contact resistance	<30mΩ	
耐电压(AC.V)1分钟	Withstanding Voltage (AC.V) 1 minute	1000V	
绝缘电阻	Insulation resistance	> 500MΩ	
防护等级	Protection level	IP67	
耐久次数	Durability	> 500次	
工作温度	Working temperature	-40°C ~ 80°C	
连接方式	Connecting mode	快速卡口连接 Quickly bayonet connect	

材料

外壳、绝缘部件	Housing, the insulating parts	高性能工程塑料	High-performance engineering plastics
五金	Hardware	锌合金(珍珠硬铬)	Zinc Alloy (pearl hard chrome)
铜针	Copper needles	铜材外壳	Copper Shell
防水圈	Waterproof circle	硅胶	Silica gel
阻燃等级	Flammability rating	UL94-V0	UL94-V0

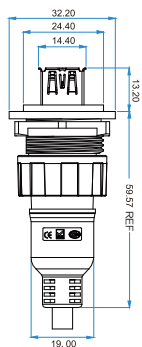
型号标志代号 MODEL CODE



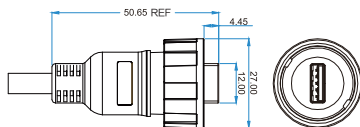
连接方式 CONNECTION SCHEMES



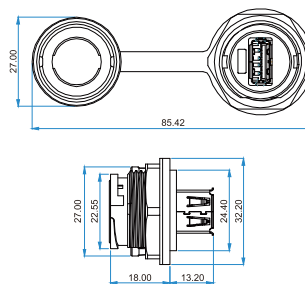
外形尺寸图 DIMENSION FIGURE



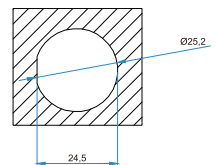
产品外形尺寸图
dimensions figure



插头外形尺寸
Plug dimensions figure



插座 SX (外形尺寸图)
SX socket (dimensions figure)



安装开孔图
Installation hole figure